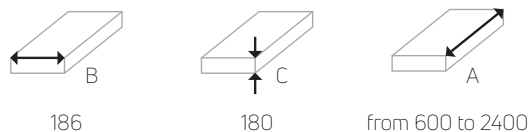


AURA electric

Free standing convector **AURA electric** is a combination of a traditional free standing convector with **24 V axial fans**. This combination guarantees the best solution for **low temperature gradient**, such as heat pumps. The combination of **1 mm galvanized steel casing** together with the **aluminum grille** creates a modern look. The convector is available in various RAL colors.

dimension (in mm)



standard colours



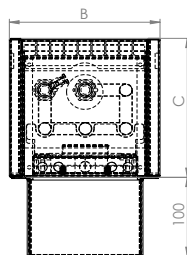
* custom colours upon request

material of the casing and legs

Casing is made from **1,0 mm galvanized steel**, legs are made from **1,5 mm galvanized steel**. It is not allowed to sit or stand on the convector.

material of the heat exchanger

Heat exchanger is made from copper pipes and aluminium lamellas. The diameter of the pipes is 15,9 mm with 0,4 mm of thickness. Endings are with 1/2" connections.



water connection

Right and left connection is possible, needs to be specified. In the standard delivery there is a hole for thermostatic head. If actuator will be used, side with the hole for the thermostatic head could be changed for the side without the hole, needs to be specified.

electricity connection

The **24 V EC fans** are controlled by **0-10 V** and are compatible with **BMS**. To connect the convector, you need a 24 V transformer and a 24 V thermostat with the possibility of 0-10 V control.

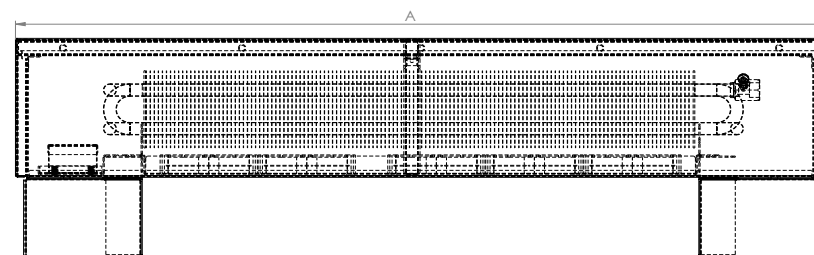
technical data

Max. operating pressure 10 bar, automatic air vent, tested in accordance with **DIN EN 442**.

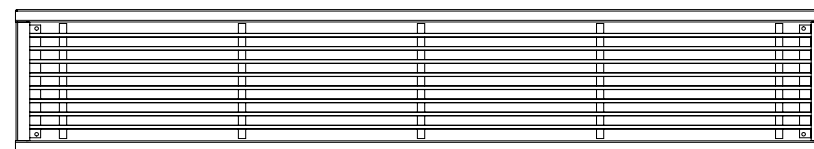
standard delivery accessories

Standing legs for finished floor, leg covers, which can hide water connection pipes with screws and wall plugs.

height C [mm]	180												
	186												
width B [mm]	186												
voltage [V]	3			6			9			9			
	heat output [W] 45/35/20°C			heat output [W] 75/65/20°C			sound level dB(A)			consumption [W]			
600	250	324	381	687	846	939	30,2	33,1	37,8	6,7			
750	384	498	584	1055	1299	1442	30,5	33,7	38,7	7,5			
1000	607	787	924	1668	2054	2281	30,9	34,5	39,9	9,2			
1300	874	1134	1332	2403	2959	3287	31,2	35,2	41,0	10,9			
length A	1500	1053	1365	1604	2894	3563	3958	31,4	35,6	41,6	12,6		
	1700	1231	1597	1876	3384	4167	4629	31,6	35,9	42,2	13,4		
	2000	1499	1944	2284	4120	5073	5635	31,8	36,3	42,8	15,0		
	2200	1677	2175	2555	4611	5677	6306	31,9	36,6	43,3	15,0		
2400	1856	2407	2827	5101	6281	6976	32,0	36,8	43,6	16,8			



view on the top aluminium grille



view of the fans under the heat exchanger

