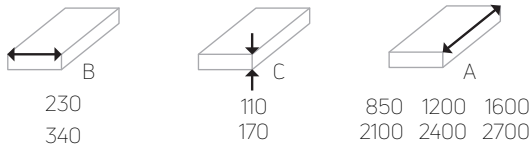


Trench convector F2C

Model F2C is the right choice when **maximum power and minimum noise** are required. Its heat exchanger has been designed to be used either for **heating or cooling**, therefore the whole power of the heat exchanger is used. Convector works on the basis of forced convection which is provided by **24 V tangential fan**. Mostly it is used as **main source of heat**.

dimension (in mm)



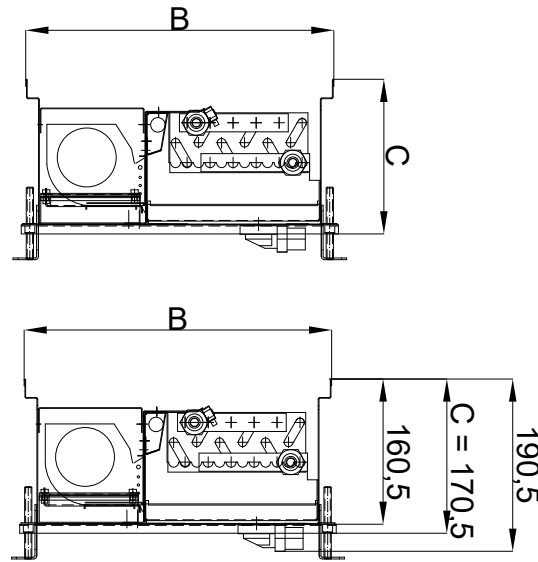
material of the duct



*special stainless steel AISI 316L for pool version upon request
 **duct from galvanized steel has condensate tray from stainless steel

material of the heat exchanger

Heat exchanger is made from copper pipes and aluminium lamellas **varnished in RAL9005**. The diameter of the pipes is 9,5 mm with 0,3 mm of thickness. Endings are with 1/2" connections.



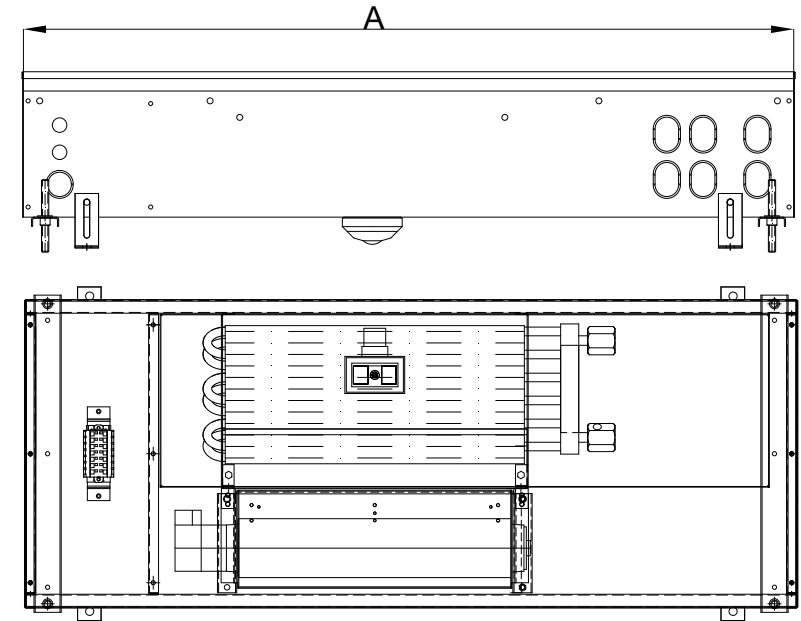
electricity connection

Fans work with **24 V EC** and are **controlled by 0-10 V**, compatible with **BMS**. To connect the convector, you need a 24 V transformer and a 24 V thermostat with the possibility of 0-10 V control. Space for electricity connection is covered by covering plate. In case of **pool version** all electrical connections are isolated in the water resistant electrical box. Water connection and electrical connection are separated from each other.

technical data

Easy connection of 2 and more convectors together, max. operating pressure 10 bar, manual air vent, possible installation to double floor (upon the request), air inlets for external source of air can be installed (upon the request), tested in accordance with **DIN EN 442**.

voltage	heat output [W] 75/65/20°C			cooling output [W] 16/18/27°C			sound level dB(A)			consumption [W]
	3	6	9	3	6	9				
A	B = 230 mm						21	26	32	9
	C = 110 mm									
850	501	890	1113	76	135	168	21	26	32	9
1200	1001	1780	2225	151	269	336	22	28	34	13
1600	1487	2644	3305	225	400	499	23	30	36	19
2100	2120	3770	4712	320	570	712	25	33	39	21
2400	2592	4607	5759	392	696	870	26	35	41	27
2700	3107	5524	6905	470	835	1043	27	36	42	33



water connection

Right and left connection is possible, needs to be specified. In standard there is a **bottom drainage** for condensation water, **side drainage** is possible upon the request. In case of bottom drainage additional 2 cm need to be added to the height. Standard drainage set is part of the delivery. Space for water connection is covered by covering plate. Water pipes could be connected either from the front side or longitudinal side.

standard delivery accessories

Height adjustment feet, raised floor height adjustment feet, rubber grommets for pre-punched connection openings, flexible stainless steel hoses with seals, drainage set, chipboard cover (protection from the dust etc. during the construction work), struts (protection from deformation while pouring concrete floor).

voltage	heat output [W] 75/65/20°C			cooling output [W] 16/18/27°C			sound level dB(A)			consumption [W]
	3	6	9	3	6	9				
A	B = 340 mm						21	27	33	19
	C = 170 mm									
850	776	1380	1725	117	209	261	21	27	33	19
1200	1553	2760	3450	235	418	522	22	29	34	20
1600	2306	4099	5124	349	620	775	23	31	37	22
2100	3288	5845	7306	497	884	1105	25	34	40	35
2400	4018	7143	8929	608	1080	1350	26	35	42	37
2700	4817	8564	10705	729	1295	1619	27	37	43	39