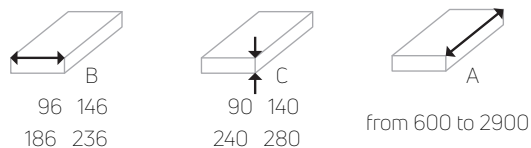


# BOKI industries

## Free standing convector WKH

WKH is a free standing convector with longitudinal aluminium grille. Heat exchanger technology allows hot air to be released through the grille to its surrounding without undesirable release of its heat to the convectors body. Thanks to the **better circulation** of the air, it has higher heat outputs compared to trench convectors. **WKH is for the rough floor.**

### dimension (in mm)



### standard colours



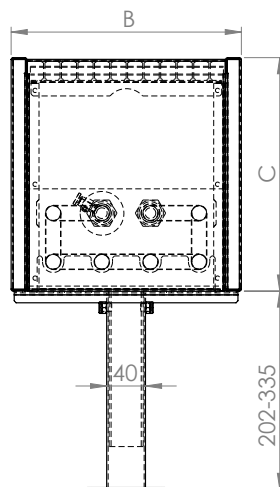
\*custom colours upon request

### material of the casing and legs

Casing is made from **1,0 mm galvanized steel**, legs are made from **2,0 mm galvanized steel**. It is not allowed to sit or stand on the convector.

### material of the heat exchanger

Heat exchanger is made from copper pipes and aluminium lamellas. The diameter of the pipes is 15,9 mm with 0,4 mm of thickness. Endings are with 1/2" connections.



### water connection

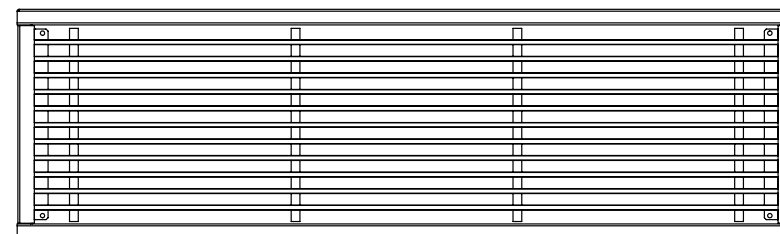
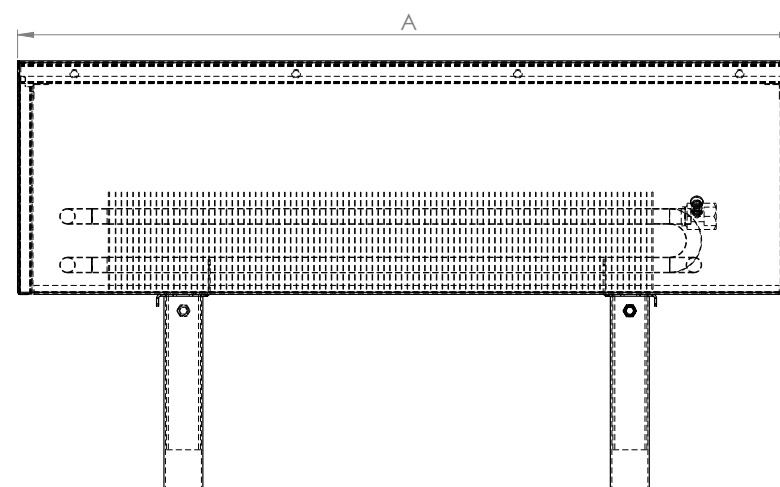
**Right and left connection** is possible, needs to be specified. In the standard delivery there is a hole for thermostatic head. If actuator will be used, side with the hole for the thermostatic head could be changed for the side without the hole, needs to be specified.

### technical data

From 600 to 1600 mm there are **two legs**, from 1800 to 2900 mm there are **three legs**, max. operating pressure 10 bar, automatic air vent, tested in accordance with **DIN EN 442**.

### heat output [W] 75/65/20°C

height C [mm]	90				140				240				280			
	width B [mm]		width B [mm]		width B [mm]		width B [mm]		width B [mm]		width B [mm]		width B [mm]			
length A	600	96	146	236	96	146	186	236	96	146	186	236	96	146	186	236
	700	109	245	549	197	379	554	722	268	515	753	982	290	557	814	1061
	800	128	286	640	229	442	647	842	311	601	880	1145	337	650	951	1238
	900	145	326	732	262	506	739	963	356	688	1005	1310	385	744	1086	1416
	1000	164	368	824	295	569	832	1083	401	774	1132	1473	434	836	1223	1592
	1100	182	408	915	328	632	924	1203	446	860	1257	1636	482	929	1358	1768
	1200	200	449	1006	360	695	1016	1324	490	945	1382	1801	529	1022	1494	1946
	1300	219	490	1098	393	758	1108	1444	534	1031	1508	1964	578	1115	1630	2123
	1400	237	531	1190	431	834	1220	1591	586	1134	1660	2163	634	1226	1795	2338
	1500	255	571	1281	469	909	1332	1737	638	1237	1812	2362	689	1337	1959	2553
	1600	273	612	1373	507	985	1444	1884	689	1340	1964	2562	745	1448	2123	2769
	1800	291	653	1464	544	1060	1556	2030	740	1443	2116	2761	800	1559	2287	2984
	2000	327	734	1646	619	1211	1779	2322	842	1648	2420	3158	910	1782	2616	3413
	2200	364	816	1830	695	1363	2003	2615	945	1854	2724	3556	1022	2004	2945	3844
	2400	-	898	2013	770	1514	2227	2908	1047	2059	3029	3955	1132	2226	3274	4275
	2600	-	979	2196	847	1666	2451	3200	1152	2266	3333	4352	1245	2449	3603	4704
2800	-	1061	2379	925	1818	2675	3493	1258	2473	3638	4750	1360	2673	3932	5135	
2900	-	1176	2604	1008	1988	2912	3780	1372	2688	3953	5162	1477	2905	4272	5580	
	-	1233	2764	1041	2047	3010	3931	1416	2784	4094	5346	1530	3009	4425	5779	



### standard delivery accessories

Standing legs for finished floor with screws and wall plugs.